

# Intelli-Flo Y Adaptor

## ⚠ WARNING

The Polar Care Kodiak can be cold enough to seriously injure the skin.

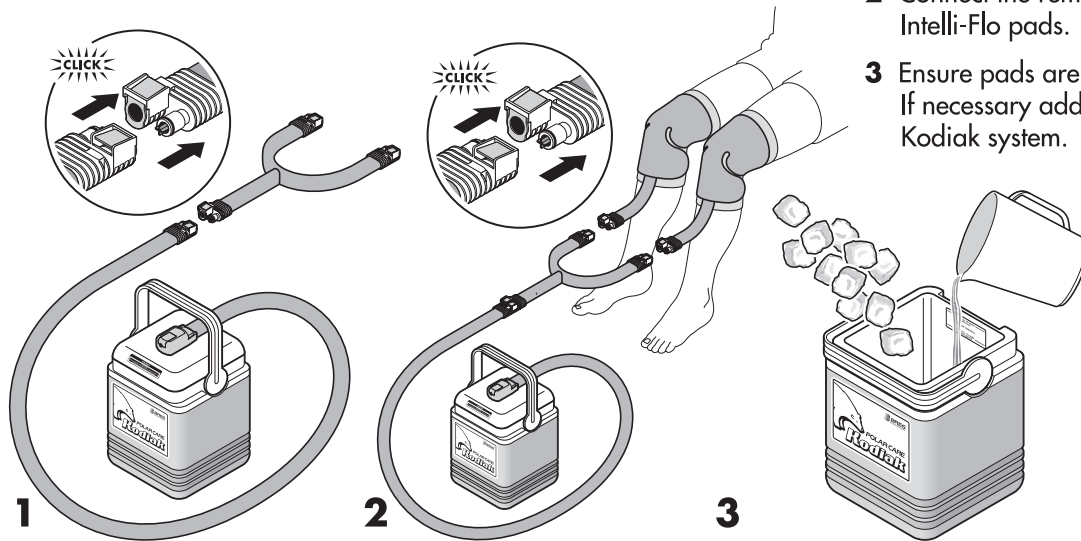
Follow the Operating Instructions (on the back and side of the unit), Product Insert (in the pouch on side of unit), and the Intelli-Flo Pad Fitting Instructions (provided with each Intelli-Flo Pad).

This Y-adaptor allows two BREG Intelli-Flo pads to be applied simultaneously, in combination with a Polar Care Kodiak, for cold therapy applications in multiple treatment areas.

**NOTE:** The Kodiak system requires enough water to feed both pads. The addition of water may be necessary after initial start-up, due to water displaced into the pads. Once both pads are filled, fill unit with additional ice and water as necessary.

### Application instructions:

- 1 Connect the center coupling of the Intelli-Flo Y-adaptor to the Kodiak system.
- 2 Connect the remaining two couplings to each of the Intelli-Flo pads.
- 3 Ensure pads are cooling properly upon start-up. If necessary add additional ice and water to the Kodiak system.



**Breg, Inc.**  
2382 Faraday Avenue, Suite 300  
Carlsbad, CA 92008 U.S.A.  
P: 760-795-5440  
800-321-0607  
F: 800-329-2734  
www.breg.com

©2024 Breg, Inc.  
AW-1.90043 REV B 0724